

Wavecom Fastrack GO

COPYRIGHT

Copyright © 2010 MOBITEK System Sdn. Bhd. All rights reserved.

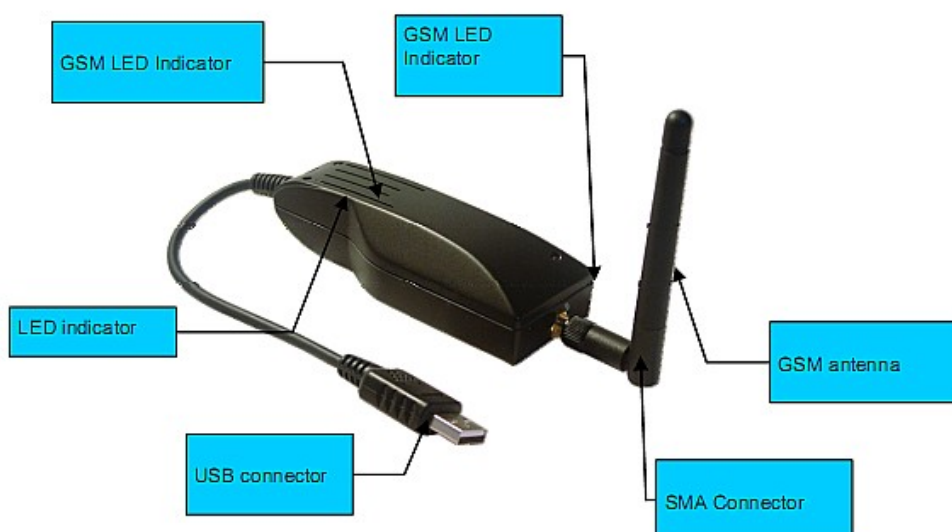
No part of this document may be reproduced, distributed, stored in a retrieval system or translated into any language, in any form or by any means, electronic, mechanical, magnetic, optical, photocopying, manual or otherwise, without the prior written permission of MOBITEK System Sdn. Bhd.

TRADEMARKS

MOBITEK™ is a registered trademark of MOBITEK System Sdn. Bhd. in Malaysia.

Wavecom is a registered trademark of Wavecom S.A. in France.

Windows is a registered trademark of Microsoft Corporation in U.S.A.



MOBITEK System Sdn .Bhd. (207015-D)

6th Floor, Suite 16, IOI Business Park

Persiaran Puchong Jaya Selatan, Bandar Puchong Jaya, Puchong 47170, Selangor, Malaysia.

Tel : +603-80644288 Fax : +603-80642109 web site : www.mobitek.com.my

Wavecom Fastrack GO

INTRODUCTION

1. **Fastrack GO** is an affordable GSM modem.
2. **Fastrack GO** comes with **MOBITEK™ SMS Gateway Development Kit** (SGDK) that can be used for:-
 - a) building a SMS application for Windows; and
 - b) adding SMS capability into existing system (e.g. CRM, ERP).
3. **Fastrack GO** is suitable for purpose of research and development, exploring SMS capabilities.

SYSTEM REQUIREMENT

1. *Windows Operating System:* Windows 2000 server / XP (32 bit only) / 2003 server (32 bit only)
2. USB port
3. JRE 1.6 (optional)
4. SIM card

CONTENTS IN PACKAGE

1. Fastrack GO
2. CD
 - a) USB driver;
 - b) **MOBITEK™ SMS Gateway Development Kit**;
 - c) Sample code

FEATURES

Send and read SMS easily via API or SQL Statement.

	VB 2008 / VB6 / C# / Java	PHP / ASP / Java
API Type	SMS API (COM / ActiveX)	Database / SQL Statement
Initialised Modem	Modem.Init(1)	No coding is necessary.
Send SMS	SMS.Send("0128888888", "Hello!")	Insert into Outbox (Message, Mobile, DateTimeQueue, Status) Values ('Hello', '0128888888', mm/dd/yyyy hh:mm:ss, 'P')
Read SMS	If SMS.Read() = True then msgbox SMS.MN msgbox SMS.MSG End if	Select * from Inbox where Status = 'New' Update Inbox Set Status = 'Read' Where Status = 'New'

MOBITEK System Sdn .Bhd. (207015-D)

6th Floor, Suite 16, IOI Business Park

Persiaran Puchong Jaya Selatan, Bandar Puchong Jaya, Puchong 47170, Selangor, Malaysia.

Tel : +603-80644288 Fax : +603-80642109 web site : www.mobitek.com.my

Wavecom Fastrack GO

SPECIFICATION

1. Dimension: 109 x 40 x 30mm
2. Weight: >74g
3. Casing: Plastic, black colour
4. Others:-

Standard	850MHz / 900 MHz. E-GSM compliant. Output power: class 4 (2W). Fully compliant with ETSI GSM phase 2 + small MS. 1800 MHz / 1900 MHz Output power: class 1 (1W). Fully compliant with ETSI GSM phase 2 + small MS	
GPRS	Class 10. PBCCH support. Coding schemes: CS1 to CS4. Compliant with SMG31bis. Embedded TCP/IP stack.	
Interfaces		USB 2.0 interface (full speed 12Mbps) USB CDC ACM Supporting custom baud rates (programmable) VCP drivers provided 1.8 V / 3 V SIM interface. AT command set based on V.25ter and GSM 07.05 & 07.07.
SMS	Text & PDU. Point to point (MT/MO). Cell broadcast.	
Data	Data circuit asynchronous. Transparent and Non Transparent modes. Up to 14.400 bits/s. MNP Class 2 error correction. V42.bis data compression.	
Fax	Automatic fax group 3 (class 1 and Class 2).	

MOBITEK System Sdn .Bhd. (207015-D)

6th Floor, Suite 16, IOI Business Park

Persiaran Puchong Jaya Selatan, Bandar Puchong Jaya, Puchong 47170, Selangor, Malaysia.

Tel : +603-80644288 Fax : +603-80642109 web site : www.mobitek.com.my

Wavecom Fastrack GO

USER'S GUIDE

Getting Started

Mount the Fastrack GO

To mount the Fastrack GO on its support and fix it, use the adhesive band.

Insert/extract the SIM card to/from the Fastrack GO

The SIM card is not reachable from the outside. Please follow the procedure below described in the figure below

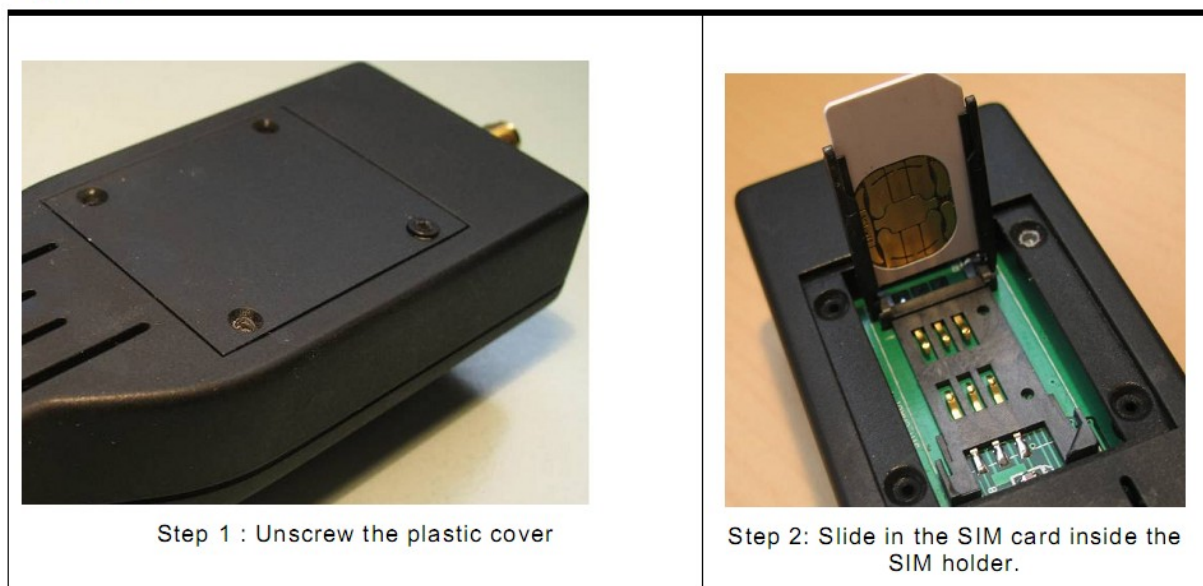


Figure 7. Procedure for SIM card insertion

Set up the Fastrack GO

To set up the Fastrack GO, perform the following operations:

- Insert the SIM card into the SIM card holder of the Fastrack GO.
- Connect the antenna to the SMA connector.
- Connect the serial cable to your machine (for FAstrack GO version RS232 only)
- Connect the USB cable to your machine (for FAstrack GO version USB only)

- The Fastrack GO is ready to work.

MOBITEK System Sdn .Bhd. (207015-D)

6th Floor, Suite 16, IOI Business Park

Persiaran Puchong Jaya Selatan, Bandar Puchong Jaya, Puchong 47170, Selangor, Malaysia.

Tel : +603-80644288 Fax : +603-80642109 web site : www.mobitek.com.my

Wavecom Fastrack GO

LED light activity	LED light activity	Fastrack GO status
Green LED	LED ON permanent	Power ON
	LED OFF	Power disconnected
Red LED	LED ON permanent	Power ON
	LED OFF	Power Disconnected
Blue LED	LED ON permanent	Connected to network
	LED OFF	Unconnected to network

MOBITEK System Sdn .Bhd. (207015-D)

6th Floor, Suite 16, IOI Business Park

Persiaran Puchong Jaya Selatan, Bandar Puchong Jaya, Puchong 47170, Selangor, Malaysia.

Tel : +603-80644288 Fax : +603-80642109 web site : www.mobitek.com.my